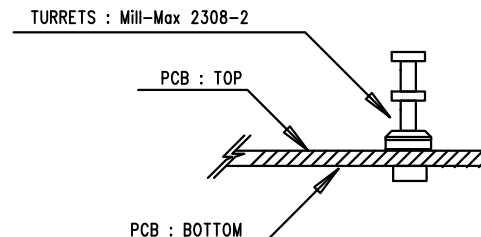



TOP SILKSCREEN
 LINEAR TECHNOLOGY
 DATE: 07-13-2017
 DC2668A-1, LTC5552
 3-20 GHz PASSIVE MICROWAVE MIXER

NOTES: UNLESS OTHERWISE SPECIFIED

1. WORKMANSHIP SHALL BE IN ACCORDANCE WITH IPC-A-610.
2. ASSEMBLY PROCESS SHALL INCLUDE: REFLOW SOLDER TOP SIDE SMD. MAXIMUM SOLDER TEMPERATURE IS 240 DEGREES CELSIUS.
3. PARTS TO OMIT WILL BE SPECIFIED ON THE BILL OF MATERIALS. LOCATIONS OF OMITTED PARTS SHALL BE FREE OF SOLDER. MASK THE SOLDER STENCIL WHERE SMT PARTS ARE OMITTED.
4. NO SHUNT
5. DEPANELIZE BOARDS AFTER ASSEMBLY AND ROUTE-OUT THE BREAKOUT TABS ON FOUR SIDES OF THE BOARD EDGE.
6. DO NOT APPLY ANY KIND OF ASSEMBLY STAMP OR QA STAMP TO ANY BOARD.



APPROVALS		 <div> 1630 MCCARTHY BLVD MILPITAS, CA 95035 PH: (408)432-1900 www.linear.com LTC CONFIDENTIAL- FOR CUSTOMER USE ONLY </div>		
PCB DES.	AK			
APP ENG.	WESTON S.			
		TITLE: TOP ASSEMBLY DRAWING		
		3-20 GHz PASSIVE MICROWAVE MIXER		
		SIZE	IC NO. LTC5552IUDB	REV.
		N/A	DEMO CIRCUIT 2668A	1
SCALE = NONE		FILENAME: DC2668A-1.PCB		SHT 1 OF 1